



Fall 2021 COVID-19 Reopening Plan For Families

August 19, 2021

As a school we remain committed to the development of the whole child in a faith-filled, Christ-centered environment.

This year's theme, ***Rooted in Christ***, is inspired by Colossians 2:6-7:

“As therefore you received Christ Jesus the Lord, so live in him, rooted and built up in him and established in the faith, just as you were taught, abounding in thanksgiving.”

During these challenging days, we must keep our eyes, hearts, and minds rooted firmly in Him. He is our solace, our inspiration, and our true guide. We give thanks to God for the many gifts we have received and through Him we will persevere!

Holy Rosary School has always relied on excellent teachers and strong families working together to develop our students' God-given talents. This year, that is as true now as ever. Remember, **rooted in Christ** all things are possible!

FAMILY RESPONSIBILITIES AND COMMITMENT

A Message from Anna Horton, Father Oakland, and the Holy Rosary School Commission

As we continue on this journey to return to in-person instruction this fall 2021, we have a collective responsibility as a school community to engage in activities that promote the health, safety, and well-being of one another. As we have seen this past year, our individual actions do impact the greater community. We are intricately tied together in ways that are both seen and unseen and therefore we have to act in unison to promote the well-being of one another. Out of love for one another, we are stressing the following points, which are also outlined throughout this document, in our return planning. **We also strongly encourage all age-eligible students to become vaccinated against COVID-19.**

- 1) By sending your children back to school in person, your family must make a commitment to engage in COVID safe behaviors. Off-campus behavior will potentially affect the health and educational options of others in our community. Doing so protects the entire community. This includes not engaging in social activities that are not COVID-19 safe.
- 2) Conduct daily, accurate health screenings prior to student arrival at school. Though we are not requiring attestations at the door, we are asking every parent to screen their child prior to arriving at school and check your child's temperature before leaving the house.
- 3) **Anyone who is not feeling well must stay home.** Notify the school office (office@holyrosaryws.org) or covid@holyrosaryws.org) immediately if anyone in the household:
 - o is COVID-19 positive, regardless of where it was contracted,
 - o is experiencing any COVID-19 like symptoms,
 - o was exposed to COVID-19 in the last 14 days, OR
 - o has been advised to quarantine or isolate
- 4) **Everyone must follow mask wearing protocols (over the mouth and nose) and social distancing mandates at all times on campus.**
- 5) Send students to school prepared with all materials and supplies, masks, lunches, water bottles, etc., each day.
- 6) Notify the school office (office@holyrosaryws.org or covid@holyrosaryws.org) if a student comes into "close contact" with someone who has tested positive for COVID-19. A close contact is defined as:
 - a. Living in the same household as a person with COVID-19, OR
 - b. Caring for a person with COVID-19, OR
 - c. Being within 6 feet of a person with COVID-19 for at least 15 minutes, OR
 - d. Being in direct contact with saliva or other body secretions from a person with COVID-19 (e.g., being coughed on, sharing utensils, kissing, etc.), OR

-
- e. Being a sibling of a person with COVID-19 at the same school, OR
 - f. Being in the same cohort or pod as a person with COVID-19, OR
 - g. Sitting close to a person with COVID-19 on the bus, OR
 - h. In a car with a person with COVID-19.

The “close contact” definition still applies even when one or both persons wore a face mask.

- 7) Pick students up immediately after school. Pick students up quickly if they become ill. People who exhibit **any** COVID-19 like symptoms at school will be isolated and sent home. Parents must be prepared to receive and respond to communications requesting immediate pick up.
- 8) Participate in contact tracing should an exposure occur. All private health-related information will be kept confidential.
- 9) Get a flu shot. Flu symptoms cannot readily be distinguished from COVID-19 symptoms and will be treated as COVID-19 symptoms.

Thank you for your efforts to be mindful of the part we all play in the well-being of one another.

REMOTE LEARNING

The school calendar is available on our website, www.holyrosaryws.org/calendar/. Remote learning is only available this year for individuals necessitating a COVID-19 quarantine for medical reasons (i.e. potential exposure, quarantine requirements, or if required by a medical professional) or if required post travel out of state per current CDC or state guidelines. Remote instruction is NOT available if a student is on vacation during regularly scheduled school times or for a short term illness. The following questions are provided to assist teachers and families in planning:

Is your student:

- a) Out for short term illness (1-2 days)? Then, no remote instruction is offered, work with the teacher(s) or study buddy to make up missed work:
- b) Out for long term illness (3 or more days, COVID quarantine)? Then, work with teacher(s) to set up remote instruction for core academic classes.

Is your student:

- a) Traveling during school time? Then, no remote instruction while student is traveling.
- b) Unvaccinated and required to quarantine after out of state travel? Then remote instruction available during required quarantine period. Work with teacher(s) to set up remote instruction for core academic classes.

HEALTH AND WELLNESS

The health and well-being of the entire Holy Rosary community depends on every community member taking health and wellness screening seriously. All families must assess their child's health and wellness every day, including checking your child for a raised temperature (>100.4 degrees) prior to sending your child to school. The same is true for staff. All staff must attest daily to their health and well-being daily and to ensure temperatures are checked prior to arriving on campus or just as they enter the building.

All staff will be trained in identifying the symptoms of COVID-19. Any student or staff member who exhibits symptoms of COVID-19 will be required to follow the Department of Health guidelines according to the screening flowchart (see page 6). **Families must notify the school immediately if a student or another household member has been diagnosed with a confirmed case of COVID-19 or is in quarantine for a suspected case.** If any household member has a confirmed case of COVID-19, all siblings in the household (even if asymptomatic) must remain in quarantine following the flow chart on the next page.

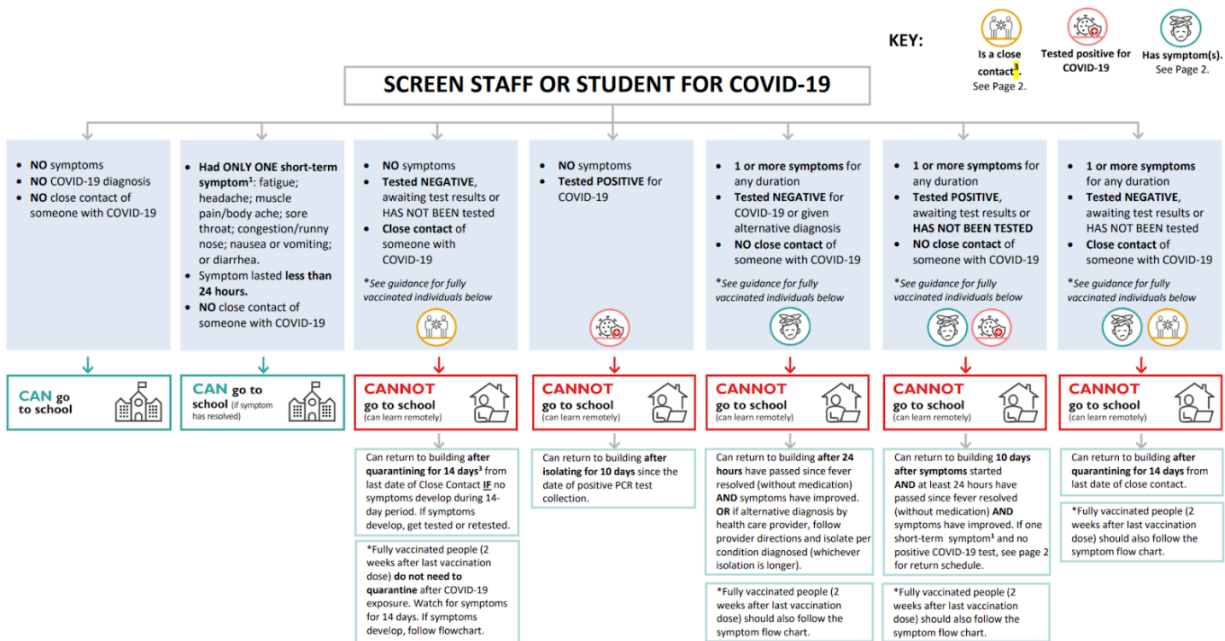
After hours notification of any confirmed COVID-19 case should be made to: covid@holyrosaryws.org as soon as possible.

Confirmed cases of COVID-19 will be reported to the King County Health Department and the Office for Catholic Schools. Holy Rosary School will coordinate with the Department of Health to determine if anyone in the class or elsewhere in the school has been in close contact with the identified diagnosed individual. Following Department of Health guidelines, individuals may be required to transition to remote learning for 14 days following exposure and/or to stay at home, even after a negative COVID-19 test result.

The school office staff will keep a detailed spreadsheet of students who have called in sick or left school during the day due to illness. Families must participate in contact tracing if a child or family member has a confirmed case of COVID-19 to assist the school with monitoring the health of the greater community.

HANDLING SUSPECTED, PRESUMPTIVE, OR CONFIRMED CASES OF COVID-19 AND OTHER ILLNESS- PER KING COUNTY HEALTH

COVID-19 Return to Work/School Flow Chart



IF A STAFF MEMBER FEELS ILL DURING THE SCHOOL DAY

If a staff member feels ill during the day, or exhibits any COVID-19 symptoms staff member shall:

- Contact the office and remove themselves from the classroom, office, or other working environment.
- Check their temperature immediately.
- If a fever of 100.4 or higher, immediately leave campus. If unable to do so, move to parish center isolation space wearing a KN-95 mask.
- If no fever, but other COVID-19 symptoms, change mask to KN-95 mask and work with office to leave campus and ensure there is coverage for your class//duties prior to leaving campus.
- Contact your health care provider for additional steps including COVID-19 testing and communicate with Anna or Kristin Bentler to discuss return date and/or sick leave.
- The office will track the following information, to be kept confidential at all times:

Staff Member Name _____

Date _____

Time _____

Symptoms _____

First Possible Return
Date _____

IF A STUDENT FEELS ILL DURING THE SCHOOL DAY

Students who exhibit symptoms of COVID-19 at school will be immediately removed from the school building and taken to a separate space outside or isolated in the health isolation room (the current 3rd floor of the Parish Center) and the student's temperature will be checked.

All staff members in the vicinity of the student will wear a KN-95 mask. If the student's temperature is 100.4 F or higher, and/or the student is exhibiting other noticeable COVID-19 symptoms, parents will be contacted to pick the student up immediately. The family will be instructed to contact their healthcare provider and seek guidance. The parent must communicate the health care guidance to the school office and the child will be required to remain home per the King County COVID-19 Screening Flowchart. The same protocol applies to staff.

Any students who are demonstrating symptoms of illness must follow the steps on the flow chart (see page 5) on handling presumptive cases of COVID-19 and other illness and when the child may return to school.

The symptoms for which we will screen are:

- A fever of 100.4F or higher
- A cough
- Shortness of breath
- A sore throat
- Chills
- New loss of taste or smell
- Muscle or body aches
- Nausea/vomiting/diarrhea
- Congestion/running nose- not related to seasonal allergies as diagnosed by a medical professional
- Unusual fatigue

____ My child has not been in close contact with anyone with suspected or confirmed COVID-19 within the past 14 days.

____ My child has not had any medication to reduce a fever before coming to school.

____ My child has not had a positive COVID-19 test for active virus in the past 10 days.

____ Within the past 14 days, a public health or medical professional has not told my child or a member of our family to self-monitor, self-isolate, or self-quarantine because of concerns about COVID-19.

The office will track the following information for ill students, to be kept confidential at all times:

Student Name	Time	Date
Temperature_____		
Symptoms_____		

Action Taken_____		
First Possible Return Date_____		

COMMUNICABLE DISEASE POLICY for CATHOLIC SCHOOLS

Holy Rosary Catholic school follows the Archdiocese of Seattle's policy regarding communicable diseases. Students or parents/guardians may obtain a copy of the policy from the school office.

ACKNOWLEDGMENT OF RISK OF COVID-19 AND OTHER COMMUNICABLE DISEASES

Holy Rosary Catholic school is committed to the health and well-being of our students, faculty/staff, volunteers, and others who are part of the Holy Rosary Catholic school community. We acknowledge that the novel coronavirus ("COVID-19"), which has been declared a pandemic by the World Health Organization, poses significant health risks and has affected many aspects of life. It is possible that other communicable diseases could pose risks to Holy Rosary Catholic school students and others in the Holy Rosary School Catholic community. To confront the unprecedented challenges and risks presented by COVID-19 and other communicable diseases, Holy Rosary Catholic school is following recommendations and guidance issued by county, state, and federal authorities and agencies, including the King County Department of Health, OSPI, and the Centers for Disease Control and Prevention.

Students and parents/guardians are expected to understand and acknowledge the dangers presented by COVID-19 and other communicable diseases. In particular, COVID-19 is contagious and believed to spread mainly from person-to-person contact. The risks associated with COVID-19 may include, but are not limited to, illness and, in some cases, death. As of the printing of this Handbook, there is no vaccine to prevent COVID-19 children ages 5-11, though it is possible that a vaccine will be available during the 2021-22 academic year. Students and parents/guardians are expected to stay informed of COVID-19, as well as other communicable diseases, and understand their associated risks.

To prevent and to reduce the spread of communicable diseases like COVID-19, students and parents/guardians are expected to:

1. Comply with all recommendations and guidance for reducing the spread of communicable diseases published by county, state, and federal authorities and agencies, including the King County County Department of Health and the Centers for Disease Control and Prevention and Washington Department of Health. Such recommendations include, but are not limited to, maintaining physical distancing guidelines, wearing a face covering, and washing hands with soap and water for a minimum of 20 seconds regularly.
2. Comply with all rules, guidelines and protocols adopted by Holy Rosary Catholic school for reducing the spread of COVID-19 and other communicable diseases.
3. Notify Holy Rosary Catholic school within twenty-four (24) hours if the student (a) has been in contact with someone known or suspected to be infected by COVID-19 or any other communicable disease; (b) has been diagnosed as being infected by COVID-19 or any other communicable disease; or (c) has been running a fever or exhibiting other symptoms as outlined by King County Department of Health.

Students must stay home if they feel ill, exhibit symptoms of COVID-19 or any other communicable disease, or have tested positive for COVID-19 or any other communicable disease.

Students who are at school must report to the front office staff if he/she becomes ill during the day. In those circumstances, Holy Rosary Catholic school will contact the student's parent/guardian and send the student home. Students are expected to stay home until they are no longer contagious as determined by a licensed medical professional.

Holy Rosary Catholic school will close its campus if Holy Rosary Catholic school deems it necessary to protect students, faculty/staff, volunteers, and others who are part of the Holy Rosary Catholic community from exposure to COVID-19 or any other communicable disease, including at the advice, guidance, or direction of local and state authorities.

DAILY COVID SCREENING POLICIES: STUDENTS

Though we will not require an attestation ticket to enter school each day, to ensure the health and safety for students and staff, a daily COVID-19 screening must be completed before sending your child to Holy Rosary School.

COVID-19 Screening Questions (to be reviewed at home each day prior to sending your child to school)

____ My child does not have any of the following symptoms or has had any of the following symptoms in the past three days, which are new or not explained by another reason (72 hours):

- A fever of 100.4°F or higher or a sense of having a fever
- Shortness of breath or difficulty breathing
- A cough
- A sore throat
- New loss of taste or smell
- Headache
- Muscle or body aches
- Nausea/vomiting/diarrhea
- Congestion/runny nose – not related to allergies as diagnosed by a medical professional
- Unusual fatigue
- Chills

____ My child has not been in close contact with anyone with suspected or confirmed COVID-19 within the past 14 days.

____ My child has not had any medication to reduce a fever before coming to school.

____ My child has not had a positive COVID-19 test for active virus in the past 10 days.

____ Within the past 14 days, a public health or medical professional has not told my child or a member of our family to self-monitor, self-isolate, or self-quarantine because of concerns about COVID-19

____ Record current temperature

SCHEDULE AND PLAN FOR DROP OFF

Rolling Drop Off/Dismissal

Last names A-L: Drop off at 8:15-8:25, pick up 2:55 (2:00 Wednesdays)

Last names M-Z: Drop off at 8:25-8:35, pick up 3:05 (2:10 Wednesdays)

Contact your child's homeroom teacher if you need to make other arrangements.

STUDENT PROCEDURES FOR ENTERING THE BUILDING

Students will check in at their designated location (one of 6 doors spread throughout the campus). **Masks or face coverings must be worn by all upon arrival on campus (upon exiting the car) and before entering the school or any campus buildings.**

- **Preschool to 2nd grade** – Parents may escort their children (if parked in a designated parking spot) to the check in location if necessary, but may not enter the building. Kindergarten parents or another designee must be present for kindergarten dismissal at the back door dismissal area.
- **Grades 3-8** – In order to reduce crowding, it is helpful if parents do not approach the drop off door. Children should exit cars by themselves at drop off and proceed to their check in station themselves.
- Students will use hand sanitizer upon entering the building and will be instructed to use sanitizer a second time, or to wash their hands after putting belongings away.
- Individual baskets will be used in addition to hanging hooks to ensure student belongings do not touch, for grades where students do not have lockers.
- Any parent needing to enter the building must do so via the main front doors, so they can be screened by office staff and determine the need to be in the building. Parent access inside the building will be for emergency reasons only.
- Parent volunteers (screened daily) may assist with monitoring crosswalks as students walk to school. All volunteers working in the school must be fully vaccinated (including chaperoning or driving on field trips).

Entry Door Assignments:

Front Door: Parents / Staff / Visitors

Back Door by main boys' bathroom: 3A, 5A, 5B, 4A, 4B

Back Door by main girls' bathroom: 1A, 3B, 6A, 6B

Front Door by 2B: 1B, 2A, 2B

Front Kindergarten Door: 7A, 7B, 8A, 8B

Back Kindergarten Door: KA, KB

Late and Forgotten Items:

A bin with a lid will be placed outside by the front door for late lunches and other forgotten items. Parents may leave items to be distributed to students after school begins outside in the bin.

Lost and Found:

A designated lost and found item pick-up day will be established once a month (on a Friday afternoon). Lost and found items will be placed out in front of the school in a location where social distancing markers can be maintained. If you are looking for an item prior to this date, contact the school office.

PROCEDURES FOR EXITING THE BUILDING

Students will follow the established staggered dismissal schedule. At dismissal, students are to pack their bags and leave the building immediately. Social distance markers will be placed in front and back of the school, where students may stand if they are awaiting a parent pick up.

PROCEDURES FOR RESTROOM USE

Bathrooms will be posted/marked for capacity number. Hooks will be hung in the hallway outside of each bathroom. Students will hang their bathroom pass on the hook to mark that they are in the bathroom. When all hooks are filled, students are to wait outside to enter the bathroom using the social distancing markers. Sinks and urinals that are close to one another will be taped off or separated using plexiglass. Designated socially distanced waiting spots will be marked outside of the bathroom door.

Teachers will instruct students on proper socially distanced restroom use, including the proper “Go, Flush, Wash, Leave” protocols. Some bathrooms may be used for handwashing throughout the day as well.

- Students must adhere to Go, Flush, Wash, Leave Rule.
- Staff restrooms remain for staff use only, no public restroom use.

PROCEDURES TO DISMISS STUDENTS TO RECESS

The stairwells will be marked to separate the “up” side and the “down” side. Some stairwells may be designated as up or down only. Students will be dismissed, a few at a time, to exit the classroom and head to recess. Classes will be assigned staggered dismissal times.

Social distancing markers will be placed on carpeted hallways as additional distancing reminders.

The risk of virus transmission is low outside, and students will remain fully masked at recess. Because of this, students may play with other students in different grades or classes who are out there at the same time as them.

Once the recess bell rings, classes will line up on the playground as they usually would, in their

designated spots using social distance markers painted on the blacktop. Teachers will instruct students to use their extended arms as spacers as they walk to re-enter the building. Upon re-entry, all students will sanitize their hands.

High touch areas on the play equipment will be sanitized as needed.

ADDITIONAL RISK MITIGATION

Vigilant Screening

- All staff will screen themselves daily for COVID-19 and families are asked to do the same with students. Keeping individuals with symptoms of COVID-19 or possible exposures home will be key in reducing potential transmission.

Ventilation

- The school has had all fresh air blowers professionally serviced. The HVAC system in the school has also been professionally serviced, and all windows will remain open at all times to ensure there is a continuous flow of fresh air into the building. All filters have been upgraded to MERV 13 and all classrooms have additional standalone air filtration units.

Cleaning and Sanitizing

- Students will be taught the proper procedures for hand-washing and sanitizing.
- Those classrooms that have faucets have been serviced to ensure proper flow of hot water. Hand sanitizing dispensers have been installed at all entrances and in all classrooms.
- Additional hand washing stations in hallways are present in the building along with no touch paper towel dispensers. All bathrooms and classrooms also have no touch paper towel dispensers installed as well.
- The “bubblers” on water fountains have all been disabled and an additional bottle fill stations will be installed.
- An electrostatic sprayer is available for emergency, quick cleaning throughout the day.
- All high touch surfaces will be cleaned and sanitized throughout the day, using COVID-19 approved products following an established cleaning schedule.
- All bathrooms will be cleaned throughout the day following an established cleaning schedule.
- All high touch surfaces on play equipment will be sanitized as necessary.
- Entry and Exit doors and multi-use spaces will be sanitized between scheduled transitions.

Face Coverings

- **All staff, students, and parents will wear face coverings at all times while on campus, even while at recess, regardless of vaccination status at this time.** Students are asked to arrive at school wearing a clean mask and bringing a **second** clean mask to wear after lunch each day.

Uniforms

- Students are asked to wear a clean uniform each day and families are asked to follow proper cleaning procedures to clean and sanitize clothing.

Physical Distancing and Cohorts

- All classrooms and common spaces have been measured to determine capacity limits to ensure social distancing is in place at all times. Desks will be placed at 3' of distance in classrooms and additional space in the school hall will be utilized to maximize space when eating. The school will follow the health department recommendations and generally students will remain in cohorts throughout the day, though cohorts are not a requirement at this time. The exceptions will be recess (students will be fully masked and outside), 5th – 8th grade math, and after school care. Students will be mixed for 5th – 8th grade math to more fully manage the integrity of the academic program. Space will be maximized as best possible, and desks will be sanitized between groups. In after school care students will remain cohorted within grade level bands (i.e grades 1-2 together, further grouped by homeroom class).

Desk Barriers

- Plastic desk guards will be used by students at their desk, during times when students are without masks, during snack time and lunch time.

Student Belongings

- Plastic baskets will be used, along with student coat hooks, to ensure that student belongings do not touch each other during the school day. Students are instructed to take all belongings home at the end of each day.

Sick Policy

- A strict sick policy will be enforced for staff and students. Any individual with COVID symptom(s) will be treated as suspected COVID case. That individual cannot attend school and it is strongly recommended he/she obtain a COVID-19 test. See the

symptom flow chart that is part of the Sick Policy section of this document (on page 5) for specific procedures and timelines. Per King County Health guidelines, siblings may attend school pending testing results (so long as they are asymptomatic). Any need to quarantine a class based on a positive COVID-19 diagnosis will be made based on the recommendation of King County Health. NOTE: In the case of a positive test within the school, the school **WILL NOT** disclose the identity of the individual who tested positive unless specifically asked by the family to do so.

CLASSROOM SET-UP

All individual classroom desks will be set up facing the same direction and spaced 3 feet apart. Plexiglass may be used in preschool as an additional barrier where large tables are shared as desk space. Group work will be creatively handled (potentially using shared online resources) as students will not be able to gather closely and work together. All students must have their own individual toolboxes. Any supplies, toys, or manipulatives to be shared must/will be fully sanitized using a COVID approved disinfectant prior to being used by another student. Additional furniture has been removed from classrooms as necessary.

LUNCH AND SNACKS

- No hot lunch program will be offered at this time.
- Students will utilize a plastic desk shield while seated at their desks and eating snack or lunch.
- All hands must/will be fully washed or sanitized before and after eating (hand washing using proper technique is preferable before eating).
- Teachers will create an organizational system to allow students in small groups to wash their hands, clean their desks and retrieve their lunches. Teachers without sinks will be assigned a time and a location for students to wash their hands outside of the classroom.
- Students will remain in seats until the teacher has excused them to put away their lunchboxes, clean their desks, wash their hands, put on a clean mask and, exit to recess following the established procedures.
- If a student forgets their lunch, the teacher will contact the front office for a mac and cheese / noodle cup and apple sauce (first missing lunch provided by HRS, subsequent missing lunches charged fee to FACTS). **There will be no shared food between students.**
- Late lunches brought in by parents will be placed outside of the school in a bin and will be delivered directly to students.
- Snacks will be eaten outside whenever possible.

SPECIALIST INSTRUCTION

All students will receive specialist instruction this year as determined by their grade level schedule (PE, Spanish, Art, Music, Library, Library-Technology). At this time there will be no singing or voice instruction unless it can be moved outside or to a large, well-ventilated space that will allow for additional spacing per student. PE instruction will take place inside the gym, but we will space fully masked students out to utilize the gym space. There will be minimal shared equipment during PE instruction, students in grades 5-8 will not dress for PE to start the year, and all students will sanitize their hands after PE instruction. Where students cannot be spaced 3' apart in the specialist classrooms (other than PE) the specialists will come to the homeroom classroom to teach.

EXTRACURRICULAR ACTIVITIES

CYO, dance, band, clubs, coding, and all other activities will be reviewed by activity and determinations will be made on each activity separately. Fall CYO soccer and cross country (virtual) will be operating.

BEFORE AND AFTER SCHOOL CARE

Before/after school care will be provided for those students registered for BASE. Drop-in care will not be offered at this time so there are predictable numbers each day for social distancing and spacing. Students in BASE will be cohorted by grade level groups and then seated by homeroom classroom. More information can be found by contacting base@holyrosaryws.org.

MASS, ASSEMBLIES, PRAYER SERVICES, SPIRIT DAYS

Each day students will continue to begin and end with prayer.

School Masses will take place on a rotation schedule each Wednesday at 8:45 am with 3-4 classes and teachers attending in person each week. All students are asked to wear perfect uniform on Mass days. The Mass will be livestreamed to the other students who will remain in the school building. Classes may attend daily Mass on other days to provide more classes with the opportunity to attend Mass each week. All students will sit in a socially distanced way, wearing masks at all times (except while receiving Holy Communion) while attending Mass in the church.

Students will also take turns to lead each other in prayer through classes and whole school prayer opportunities, live streamed from individual classrooms. Students will also continue to engage in service projects and will have the opportunity to participate in their Faith Families remotely, as we would usually do in person.

SOCIAL-EMOTIONAL SUPPORT

Additional emphasis will be placed on social-emotional well-being, community building, and building connections within the learning environment, especially given the high-stress nature of this COVID-19 time period. Schoolwide Positive Behavior Interventions will be in place for all students. Our school counselor, Lauren Samson, is available Monday – Thursday (lsamson@holyroaryws.org).

STUDENTS WHO ARE TEMPORARILY REMOTE

Holy Rosary School will only provide remote learning for those students outlined previously in this document.

All teachers will have an external document camera available and external microphone, if needed, to video conference with students at home via Zoom. Students at home will be provided with all necessary materials and supplies and will have access to the Google Classroom. Google Classroom will be set-up in most grade levels to allow for flexibility in the event of a sudden need for a student to quarantine him or herself at home or in the event a class is required to revert to remote learning.

It is important to note that the model for remote instruction will differ this year for the few students who may access it from time to time, as our instructional model will be in-person instruction. Students at home may watch core content at home in real time, observing what is happening in the classroom and participating as best they are able from home. Students at home may also have an opportunity for teacher conferencing and assessments while at home.

While classes may be recorded, with the appropriate parent permission, students at home are strongly encouraged to join live instruction so they can participate in the class as much as possible. Class length may vary based on the day and the content- some lessons may be extended by individual work time. All recordings of lessons remain the sole property of Holy Rosary School and should never be recorded and/or shared.